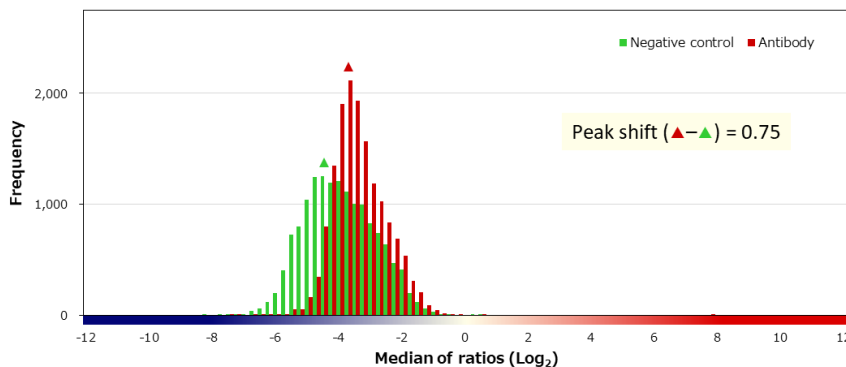
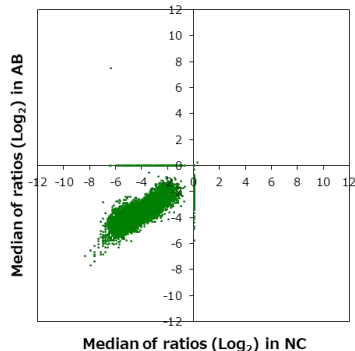


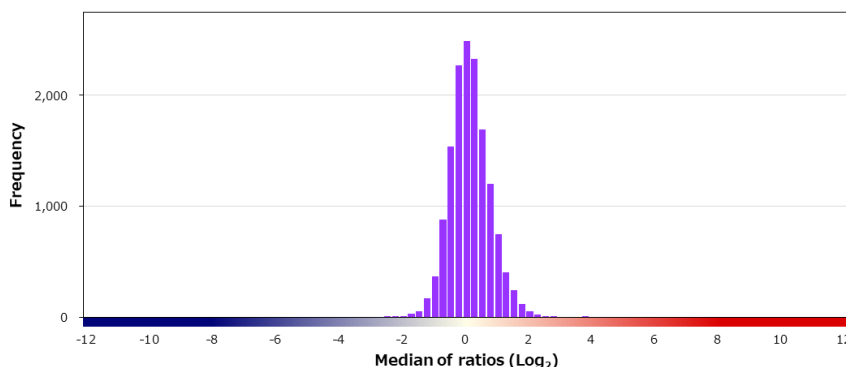
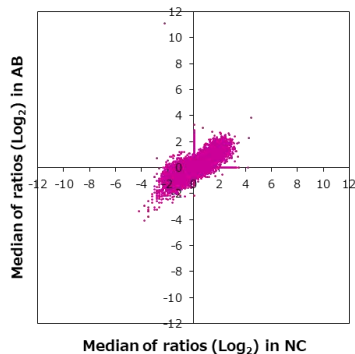
Supplier	Product code		Lot #
Agilent	IR06761		10118903
Host	Clonality	Isotype	Clone
Mouse	Monoclonal	IgG1, kappa	F5D
Applications			
<input type="checkbox"/> WB	<input type="checkbox"/> SW	<input type="checkbox"/> ELISA	<input type="checkbox"/> FCM
<input type="checkbox"/> ICC	<input type="checkbox"/> IF	<input checked="" type="checkbox"/> IHC	<input type="checkbox"/> IP
<input type="checkbox"/> B/N			
Note			

## タンパク質マイクロアレイ (18K)

### 測定値 (Raw データ) 分布

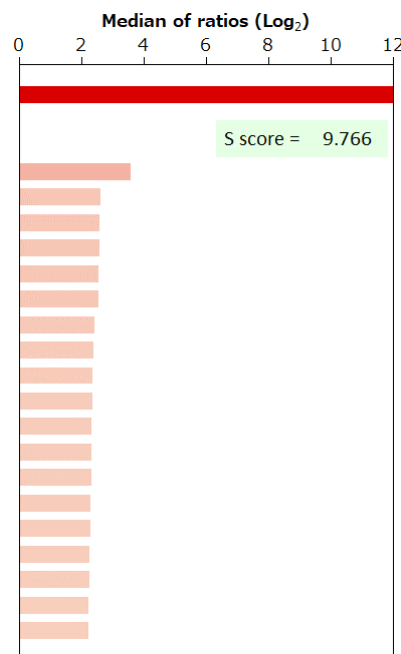


### 補正值分布



### 特異性検証

Rank	Gene	Protein	Score
<b>On target</b>			
1	MYOG	NP_002470.2	13.364
<b>Off target</b>			
2	MLF1	NP_001182361.1	3.598
3	MRPL40	NP_003767.2	2.628
4	FATE1	NP_149076.1	2.581
5	TMEM237	NP_689601.2	2.580
6	NQO1	NP_000894.1	2.565
7	YAF2	NP_005739.2	2.559
8	REEP2	NP_001258732.1	2.412
9	BTBD9	NP_689946.2	2.379
10	ZNF385D	NP_078973.1	2.372
11	JSRP1	NP_653217.1	2.350
12	FSHB	NP_000501.1	2.341
13	CD247	NP_000725.1	2.323
14	ATP6V1G1	NP_004879.1	2.319
15	CCL18	NP_002979.1	2.295
16	KDEL3	NP_006846.1 (V199G)	2.295
17	NDUFS5	NP_004543.1	2.265
18	HIST1H3E	NP_003523.1	2.252
19	RPS24	NP_001017.1	2.231
20	RABGAP1L	NP_001030307.1	2.224



BSA	-	HA peptide	-	6xHis peptide	-	FLAG peptide	-
-----	---	------------	---	---------------	---	--------------	---